

### ELIMINATES BELT GAPPING

## Warrior Roll & Guide Support Beds

The Warrior Roll & Guide Support beds create a seamless seal, helping to eliminate dust and spillage in the load zone.

The effective design of the Roll & Guide Bed utilizes low friction slider bars on the wing sections and rollers in the center. As a result, belt drag is minimized while the belt is fully supported at the edges—right where it is needed. The adjustable wing sections ensure a flat level surface for the conveyor belt and the load zone giving the sealing system the ability to achieve optimal performance.

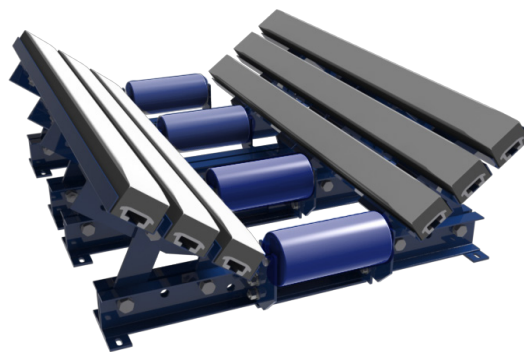
### BENEFITS

- Rubber bars with polyurethane top greatly reduce friction with conveyor belt and absorb impact to protect conveyor belt
- Increases skirtboard life by removing gaps between skirtboard and seal
- Eliminates crimping of interior skirt liners

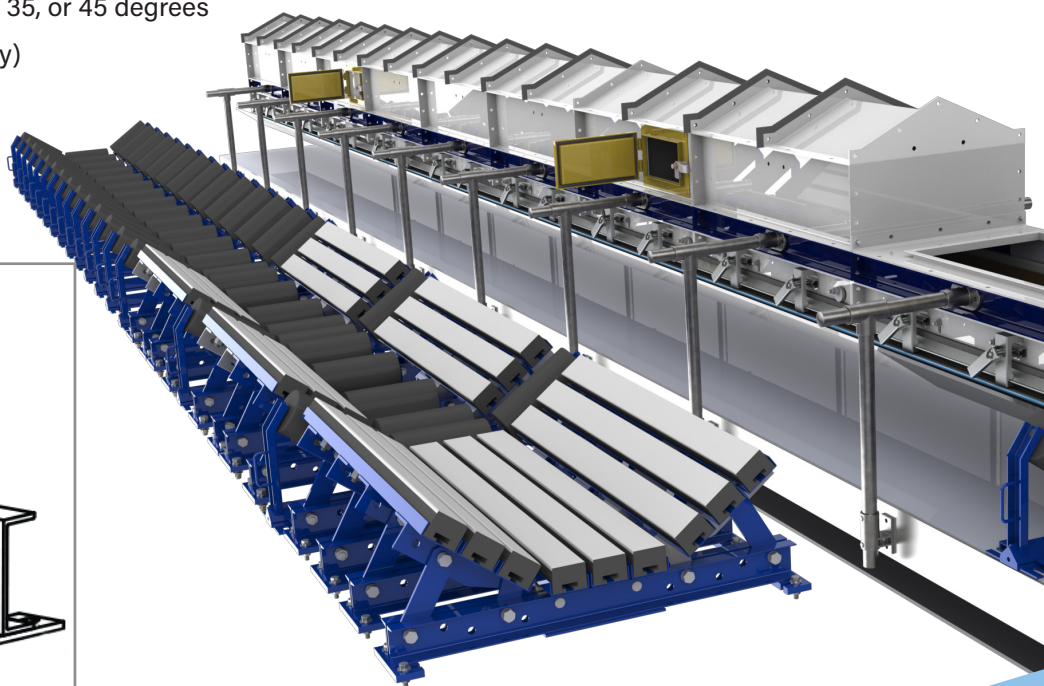
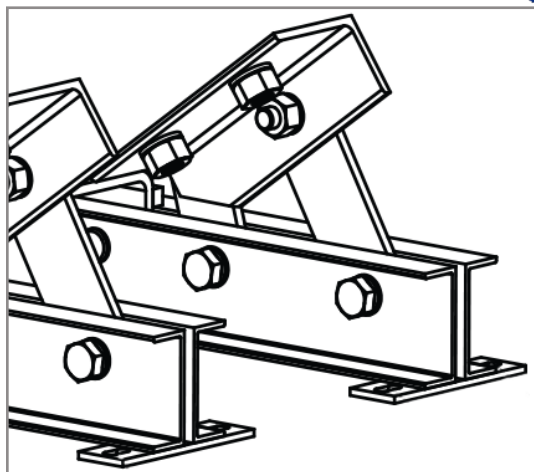
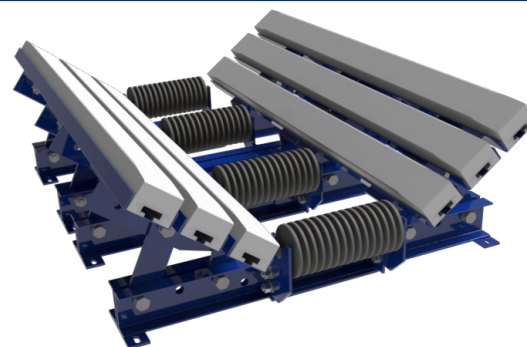
### FEATURES

- 4-ft sections are standard; other options available
- Troughing angles: adjustable to 20, 35, or 45 degrees
- CEMA rating: C, D, E, or F (rolls only)
- Meets CEMA design standards
- Center standard or impact rollers

#### STANDARD STEEL ROLL



#### IMPACT ROLL



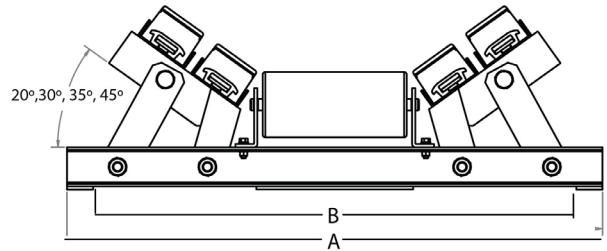
## ORDERING INFORMATION

BELT WIDTH (in./mm)	NUMBER OF BARS PER SIDE	PRODUCT NO.*	BASE	
			B (in./mm)	A (in./mm)
24 (500-650)	2	BSCT0024XXR0	33 (838)	36 (914)
30 (650-800)	2	BSCT0030XXR0	39 (991)	41.5 (1054)
36 (800-1000)	3	BSCT0036XXR0	45 (1143)	47.5 (1207)
42 (1000-1200)	3	BSCT0042XXR0	51 (1295)	53.5 (1359)
48 (1200-1400)	3	BSCT0048XXR0	57 (1448)	59.5 (1511)
54 (1400-1600)	3	BSCT0054XXR0	63 (1600)	65.5 (1664)
60 (1600-1800)	4	BSCT0060XXR0	69 (1753)	71.5 (1816)
72 (1800-2000)	5	BSCT0072XXR0	81 (2057)	83.5 (2121)

\* **R0** = Standard Roll, or **R1** = Impact Roll

**XX** = CEMA Rating & Roller Size

(Example: "C5" = CEMA rating "C" with 5" roller size)



It is important to ensure that adequate power is available in the conveyor drive to compensate for additional frictional drag when installing one or more Warrior Slider Beds.

- Typical bars and beds are 48" (1220 mm). Custom lengths are also available.
- Not recommended for belts with speed over 700 fpm.

## Warrior Impact Bars

### CHARACTERISTICS

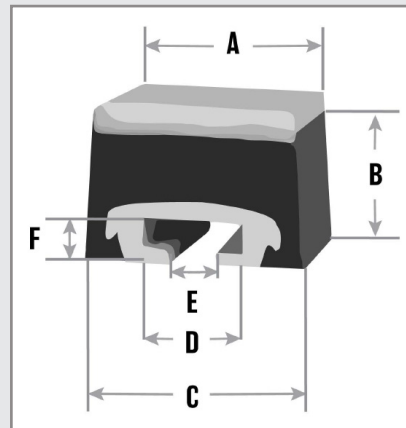
- Coefficient of Friction: 0.5
- Service Temperature Range:  
-20° to 140° F (-29° to 60° C)

### CONSTRUCTION

- Fasteners: T-Bolts
- T-Slot: Aluminum
- Bearing Layer: UHMW Polyurethane
- Absorption Layer: 50-Durometer SBR Rubber

### CHEMICAL EXPOSURE

- Warrior Impact Bars can be used with most industrial chemicals



48-INCH BAR	
A	3.75" (95mm)
B	2.95" (75mm)
C	3.93" (100mm)
D	1.81" (46mm)
E	.86" (22mm)
F	.86" (22mm)

WARRIOR IMPACT BAR *	
Product Number	BBSICB-A1-4

\* Part Number is for 48" (1220mm) bar. Custom lengths are available.



+1 (800) 843-2625  
BenetechGlobal.com

©2024 Benetech, Inc. | Issue: 2024-05

